



The Natural History of Darley Park

Contents

Short history of Darley Park

The walled garden – Hydrangea Derby and the Wildlife Garden

Tree trail

Butterflies

Bees

Other invertebrates

Birds

Mammals

Signs of Medieval History



William Woolley and the Holdens



1897 View towards town centre with St Alkmund's Spire



The Evans family

DET



Darley Hall



Abbey and Gardens, Darley Abbey. D.A. 5.

Copyright Lilywhite,
Sowerby Bridge.

Darley Hall



1907



From estate to public park 1929 - 1931



Official Opening

30th June 1931





ESTATE STAFF.

LEFT TO RIGHT.

A. Stafford, W. Chadwick, C. Ford, E. Bonshor,
W. Parker, Brown, Smith, A. Harlow, W. Biggs.

From 1931

Photo from the Nelson Collection

1939 Central School and Dig for Victory

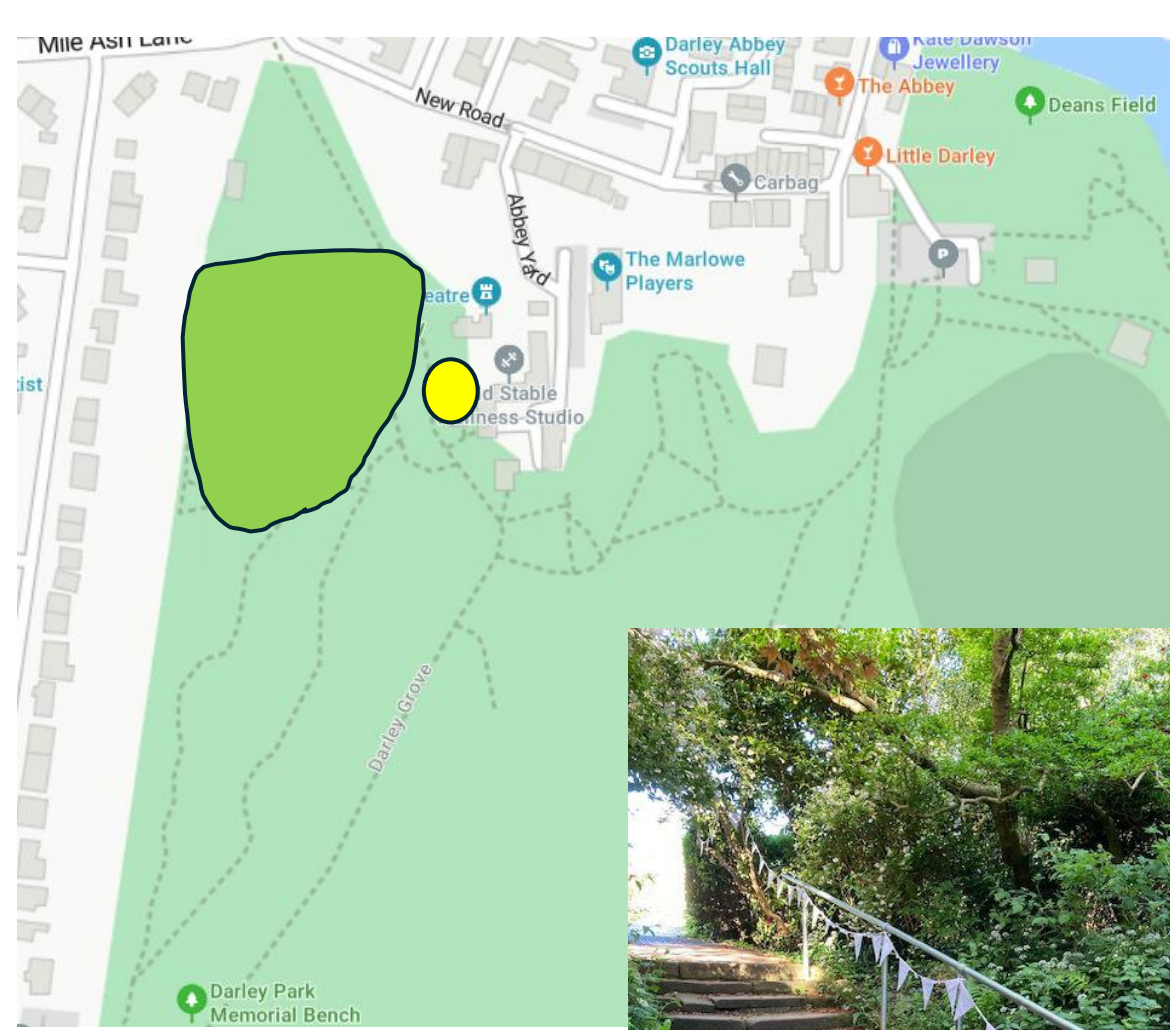
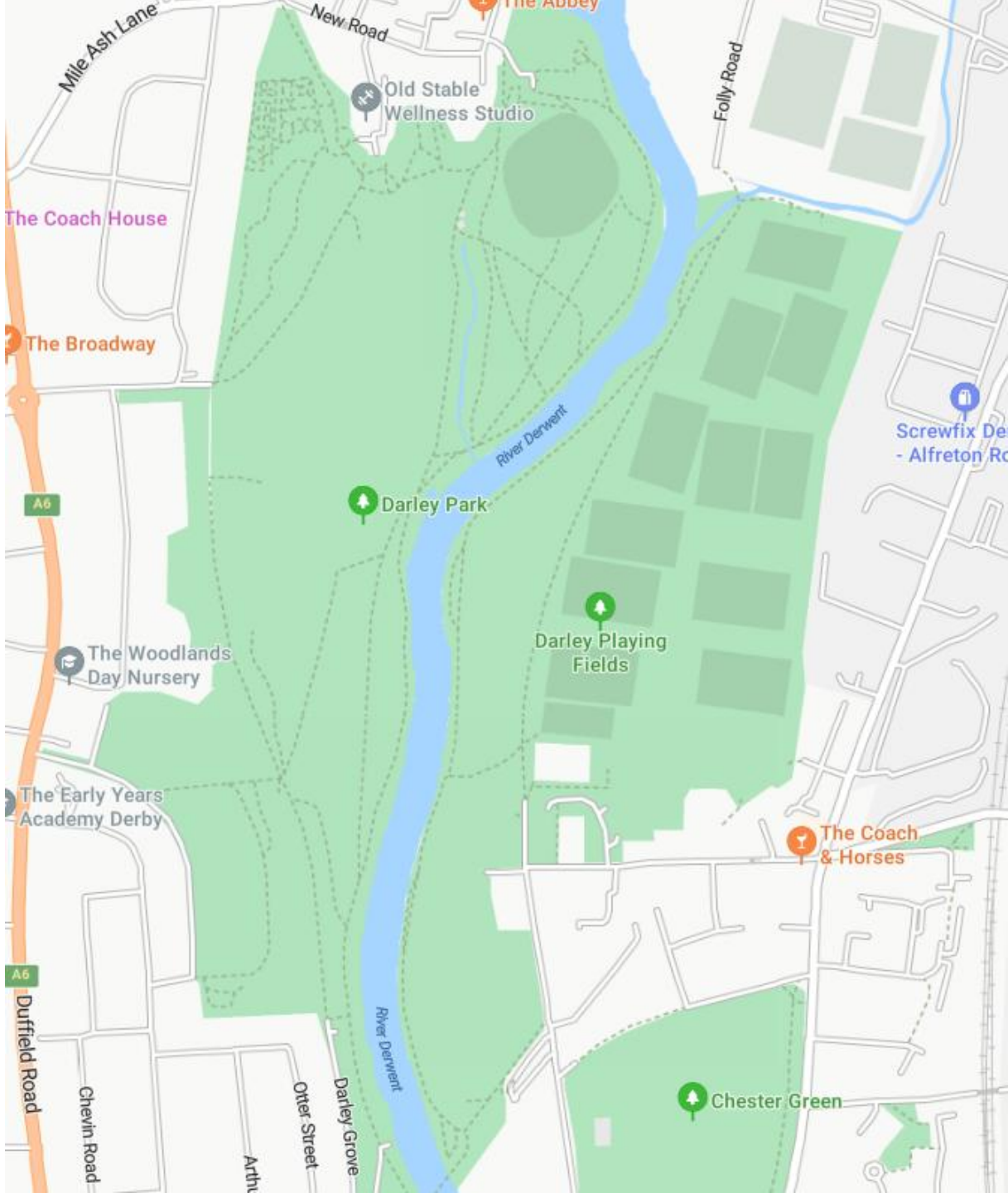


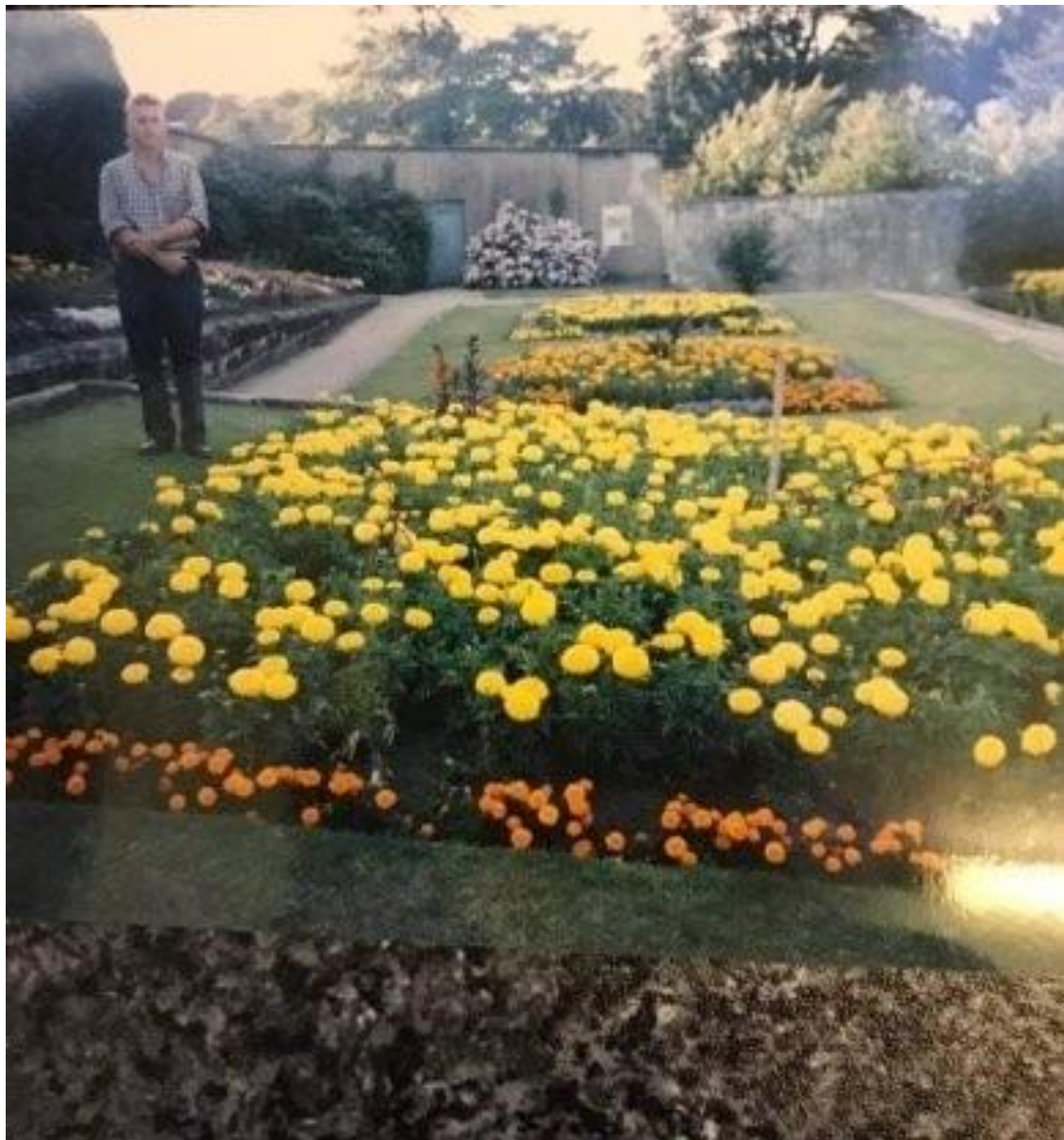


📷 Demolition work under way at Darley Hall in 1962

Billiard Room to Terrace Cafe







Gardener Stuart Ratcliffe

Photo courtesy of Ian Ratcliffe.



Hydrangea Derby





March



June



September



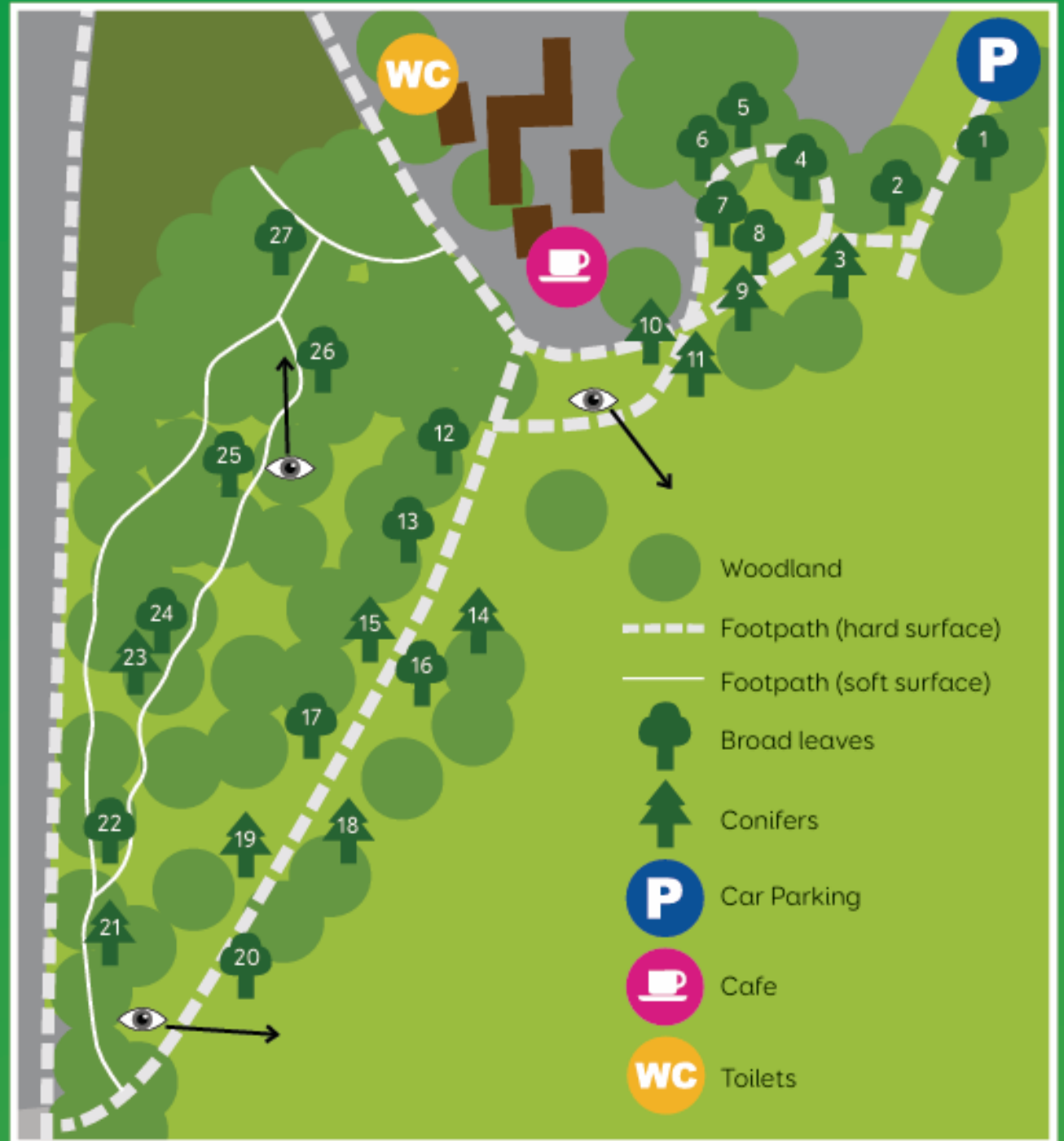
October



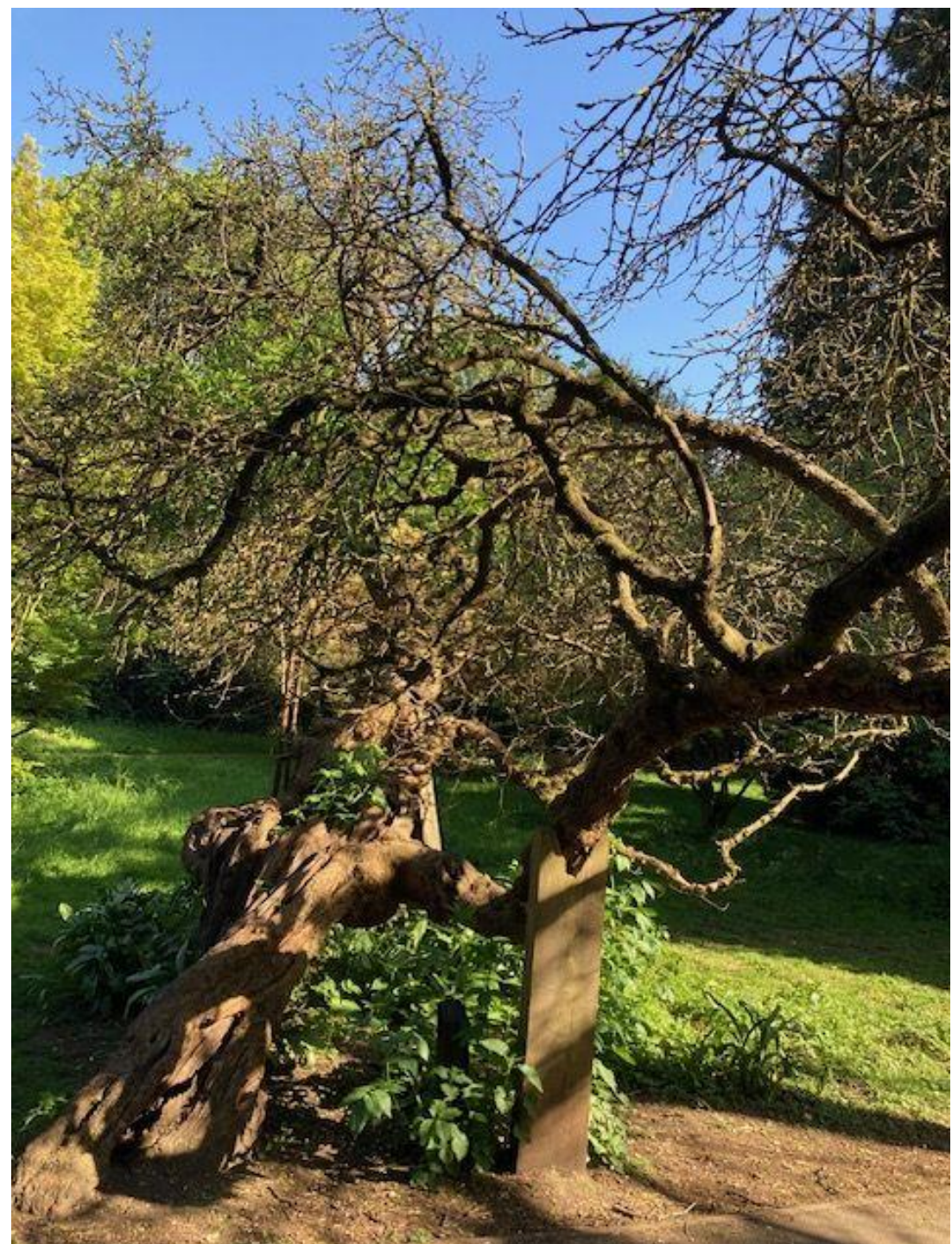
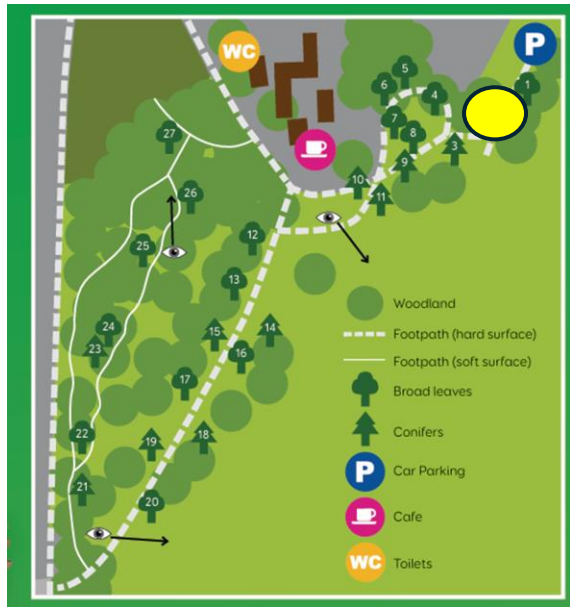
December



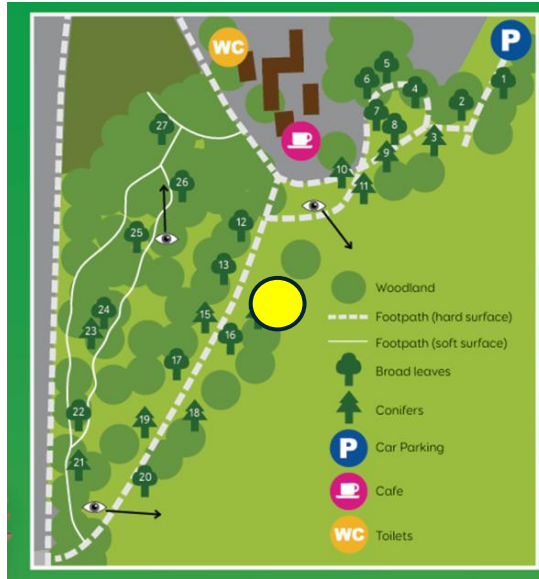
Tree Trail



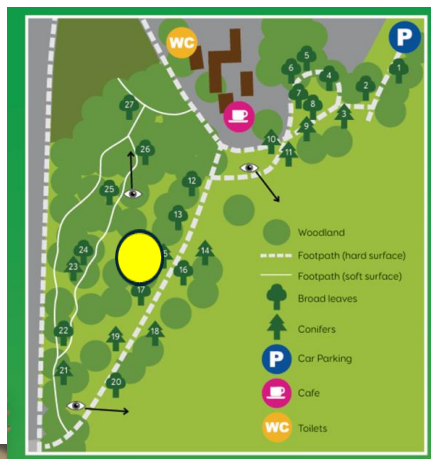
Black Mulberry



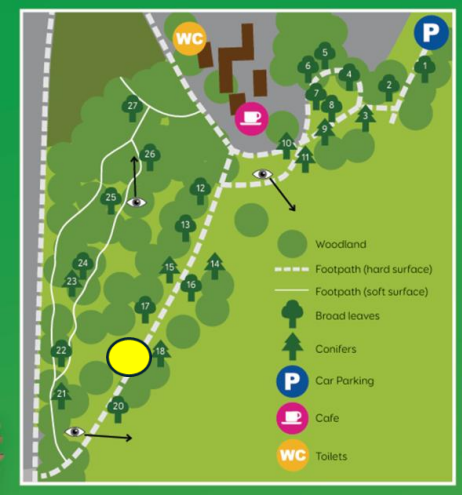
Blue Atlas Cedar



Fernleaf Beech

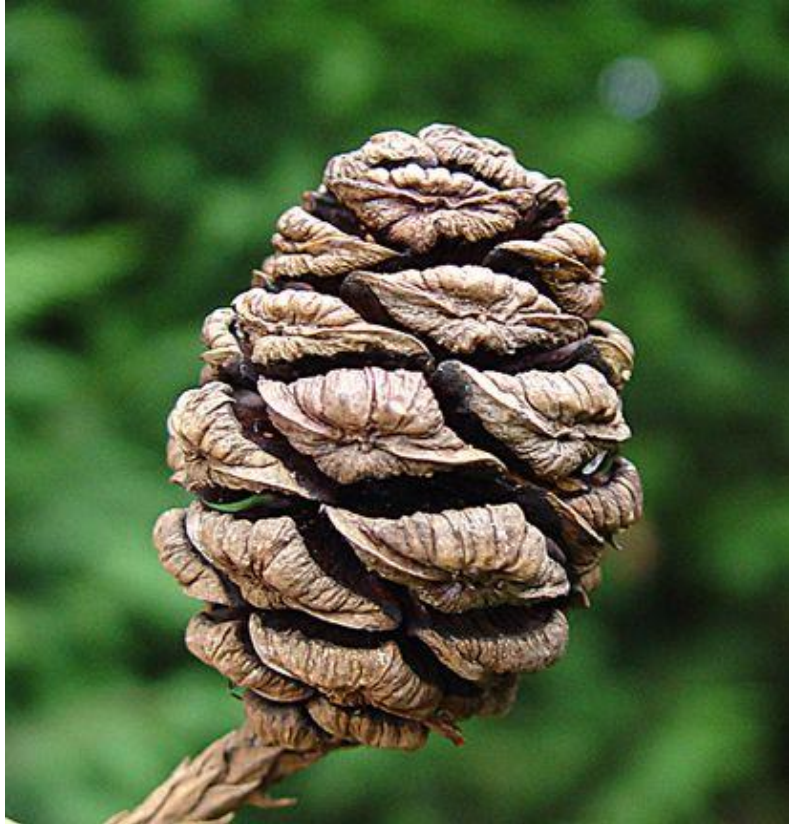
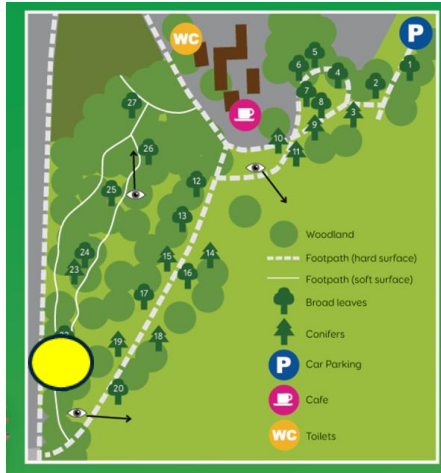


Wollemi Pine

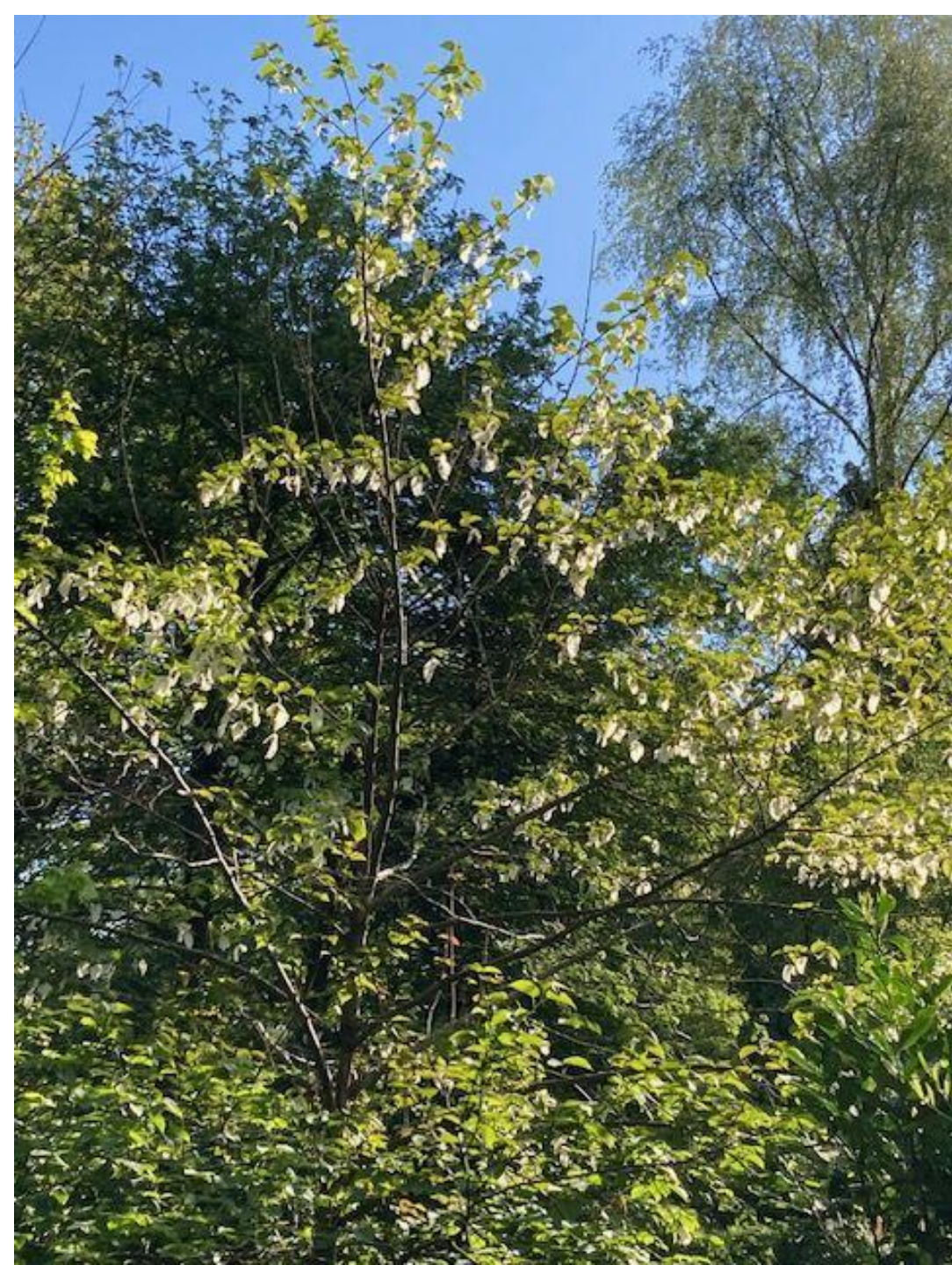
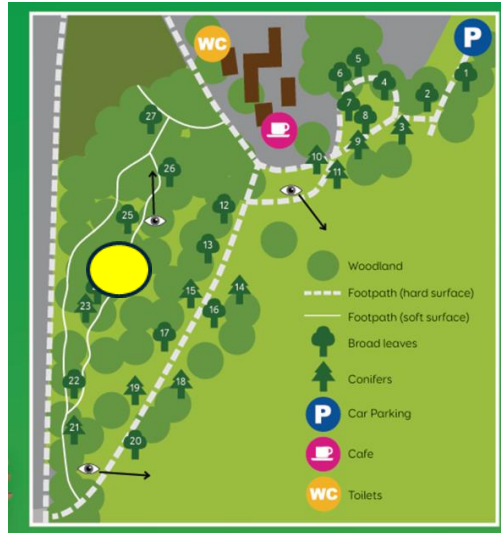


Adobe Stock | #403797485

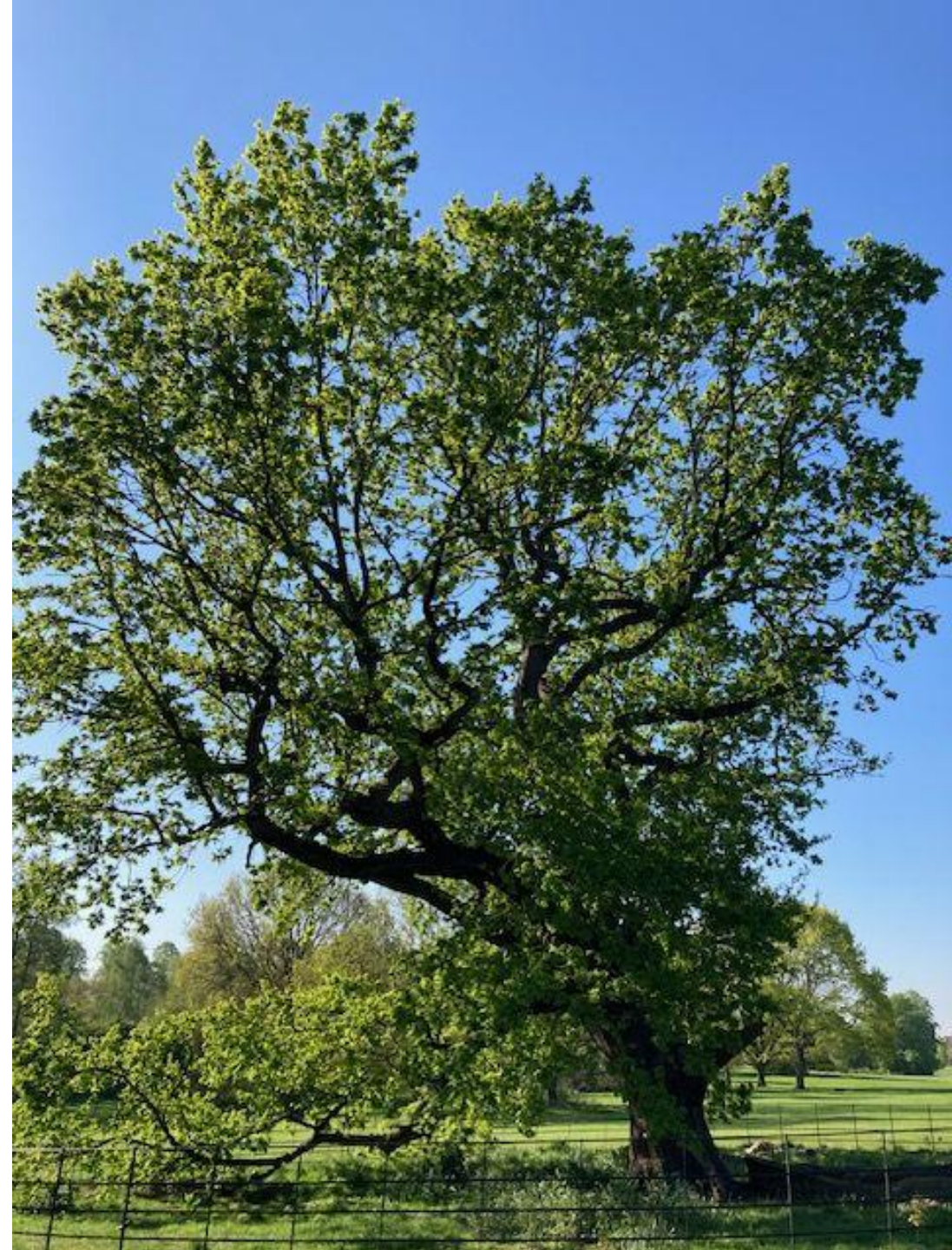
Giant Redwood (Wellingtonia)



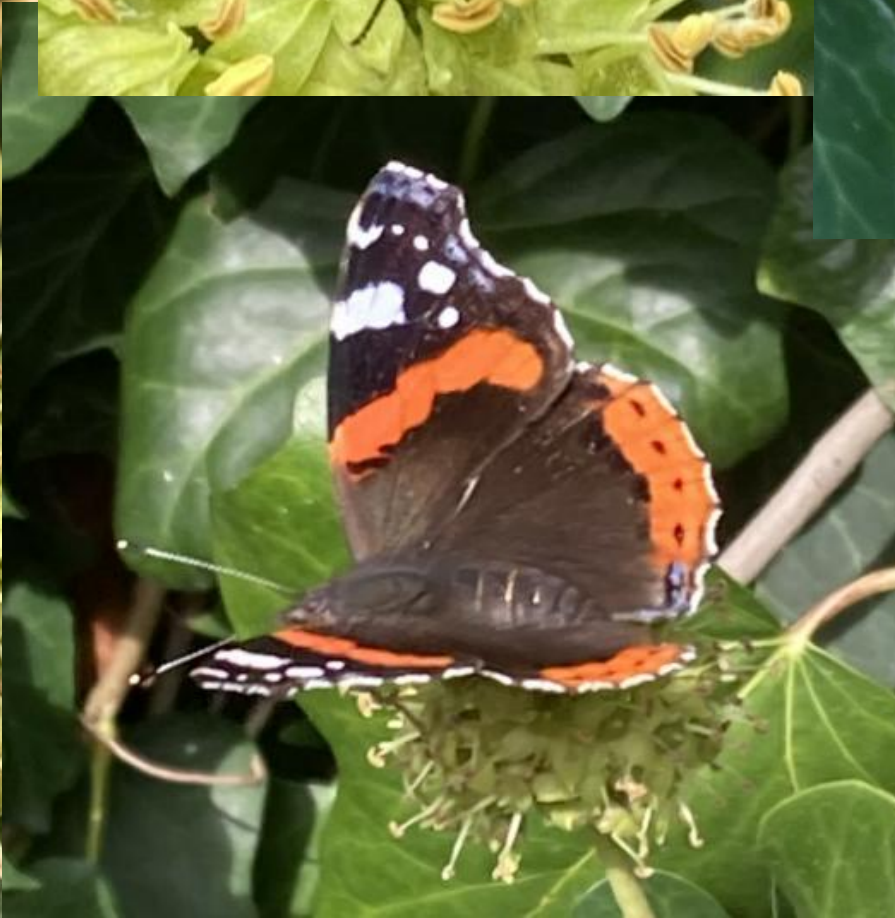
Pocket Handkerchief



English Oak



Ivy



Butterflies in the Wildlife Garden 2025

Brimstone

Comma

Common Blue

Gatekeeper

Green Veined White

Holly Blue

Large White

Meadow Brown

Orange Tip

Painted Lady

Peacock

Red Admiral

Small Copper

Small Tortoiseshell

Small White

Speckled Wood

Bees in the Wildlife Garden 2025

Honeybee

Buff tailed Bumblebee

Red tailed Bumblebee

White tailed Bumblebee

Common Carder

Hairy footed Flower Bee

Mining bee

Mourning bee

Sweat Bee

Yellow-faced Plasterer bee

Bumblebee or Honeybee or Solitary Bee?

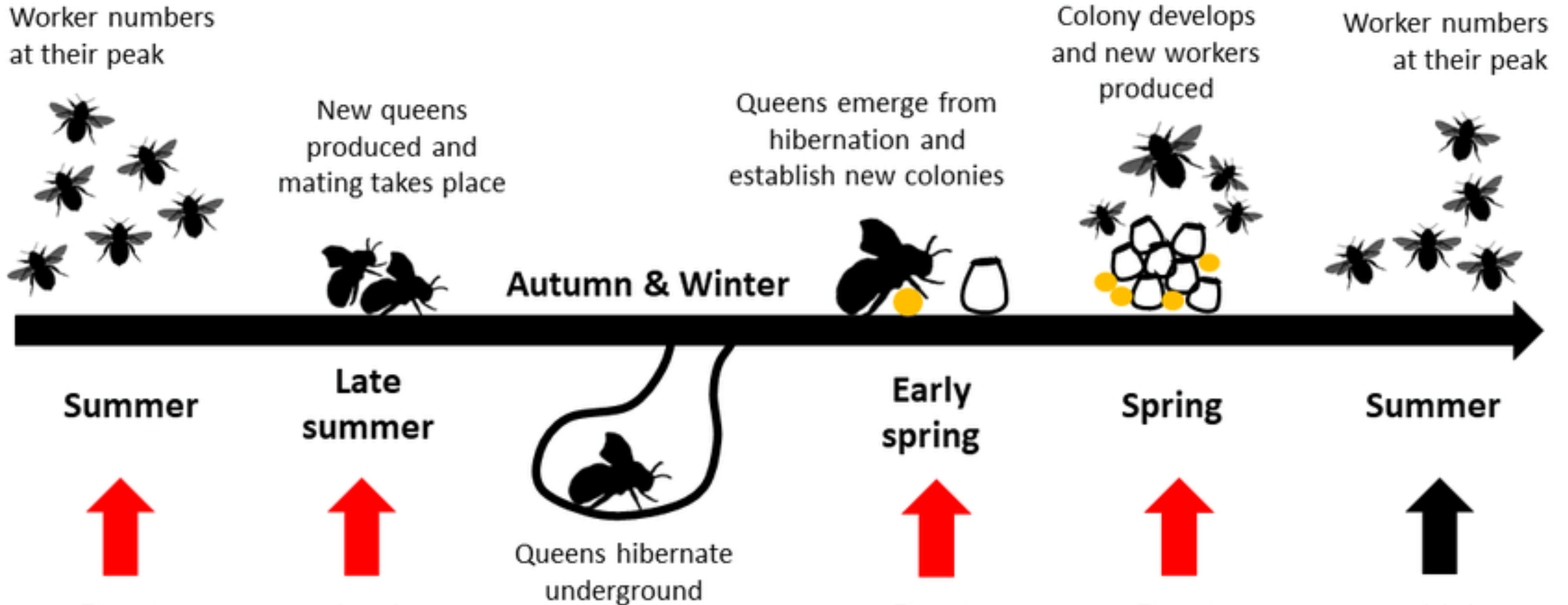
270 different species of bee in
the UK

1 honeybee

24 bumblebees

245 solitary bees

Bumblebee lifecycle



Buff-tailed Bumblebee



Queen



Worker



Male

February - November



Common Carder



Queen



Worker



Male

March - October



Garden Bumblebee



Queen



Worker



Male

April - September



Red tailed Bumblebee



Queen



Worker



Male

March - September



Tree Bumblebee



Queen



Worker



Male

February - August



Solitary Bees

Mining bees

- 65 species in UK
- nest in the soil
- short pointed tongues
- collect pollen on their hind legs

Flower bees

- 5 species in UK
- fairly chunky
- most nest in the soil
- long tongues to reach into deep flowers
- carry pollen on the hind legs

Solitary Bees

Sweat bees

- 40 species UK
- short pointed tongues
- often nest in soils
- collect pollen on the underside of the abdomen and on the legs

Leafcutter Bees

- 7 species in UK
- have large jaws
- collect sections of leaves in which they build their aerial nests in old beetle holes
- pollen is collected by females on the hairs on the underside of the abdomen.
- can attract to your garden by providing a bee hotel

Solitary Bees

Mason bees

- 11 species in UK
- vary dramatically, with some species nesting in snail shells and others nesting aerially in stems
- collect pollen on the underside of their abdomens
- Some of these species are generalists, collecting pollen from a variety of plant species, while others are very specific.

Yellow faced bees

- 11 species in UK
- small, averaging 6-7mm long
- aerial nesters
- No pollen collecting apparatus so collect pollen and nectar in their crops before regurgitating it back at the nest.

Hairy-footed Flower Bee



Sweat Bee



April - October

Other Invertebrates in the Wildlife Garden

Banded snail

Batman Hoverfly

Beetle larva

Broad bodied Chaser

Centipede

Common Wasp

Dronefly

Earthworm (several species)

European Hornet

False Blister Beetle

Footballer Hoverfly

Green Bottle Fly

Harlequin ladybird

Hornet mimic hoverfly

Hoverflies (several species)

Millipede

Narcissus Fly

Southern Hawker

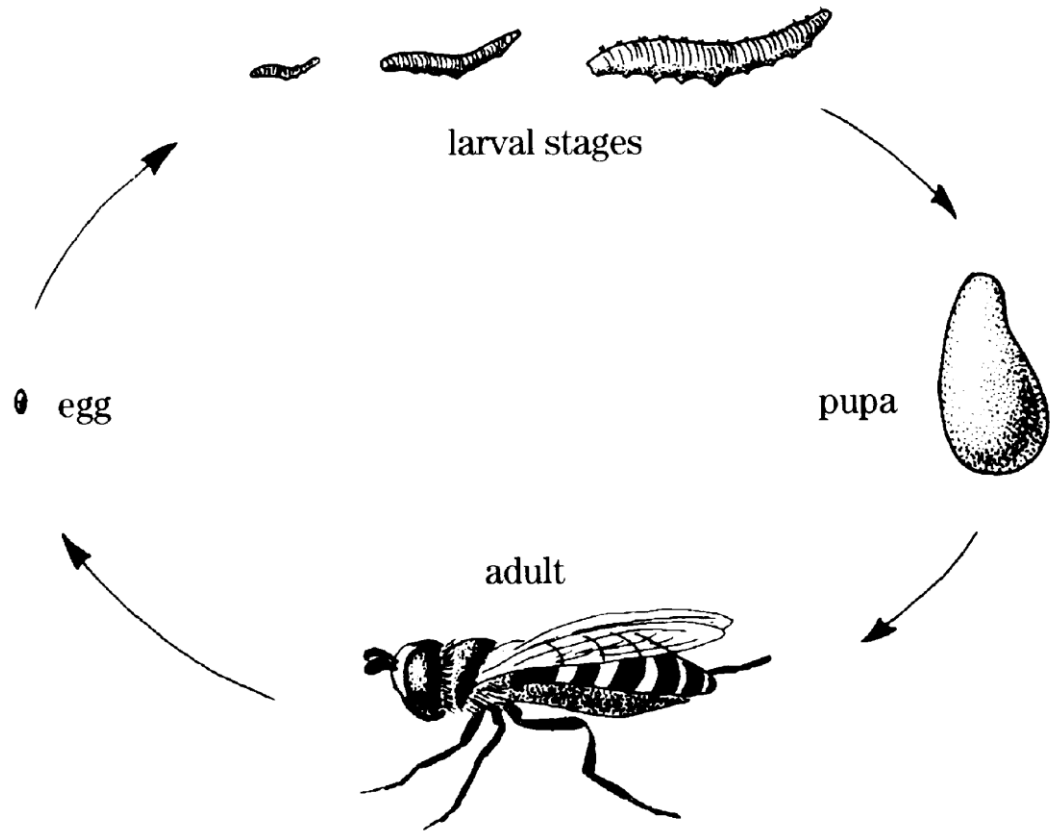
Tapered Dronefly

Thick legged Flower Beetle

Turnip Sawfly

2 spot, 22 spot and 7 spot ladybird

Batman Hoverfly



Cinnamon Bug



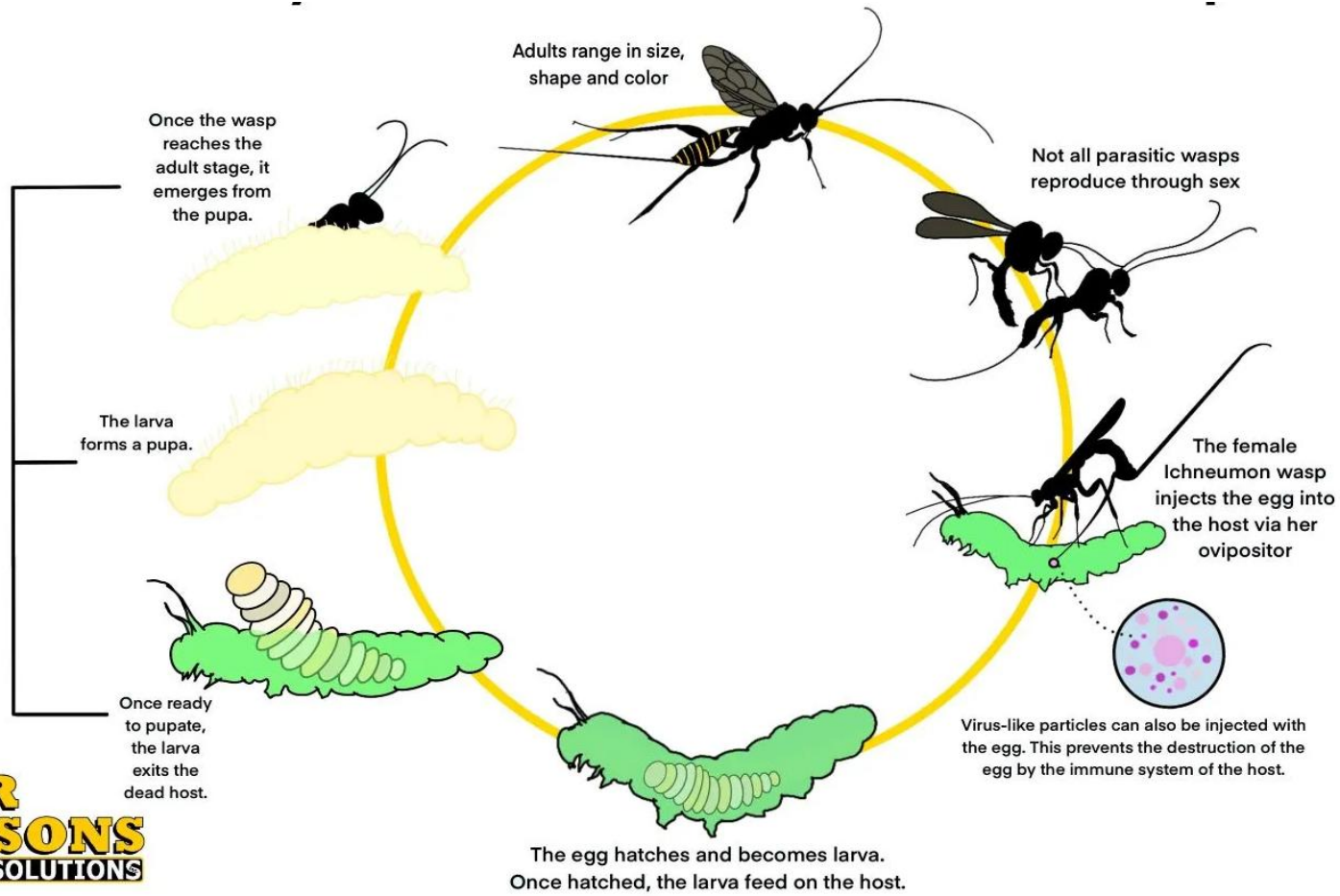
Greenbottle



Mint Moth



Ichneumon Wasp



Birds 'in' the Wildlife Garden 2025

Blackbird

Blackcap

Blue Tit

Carrion Crow

Chaffinch

Chiffchaff

Coal Tit

Dunnock

Great Tit

House Sparrow

Jackdaw

Magpie

Nuthatch

Raven

Robin

Song Thrush

Woodpigeon

Wren

Flying Overhead

Black headed Gull

Buzzard

Canada Goose

Cormorant

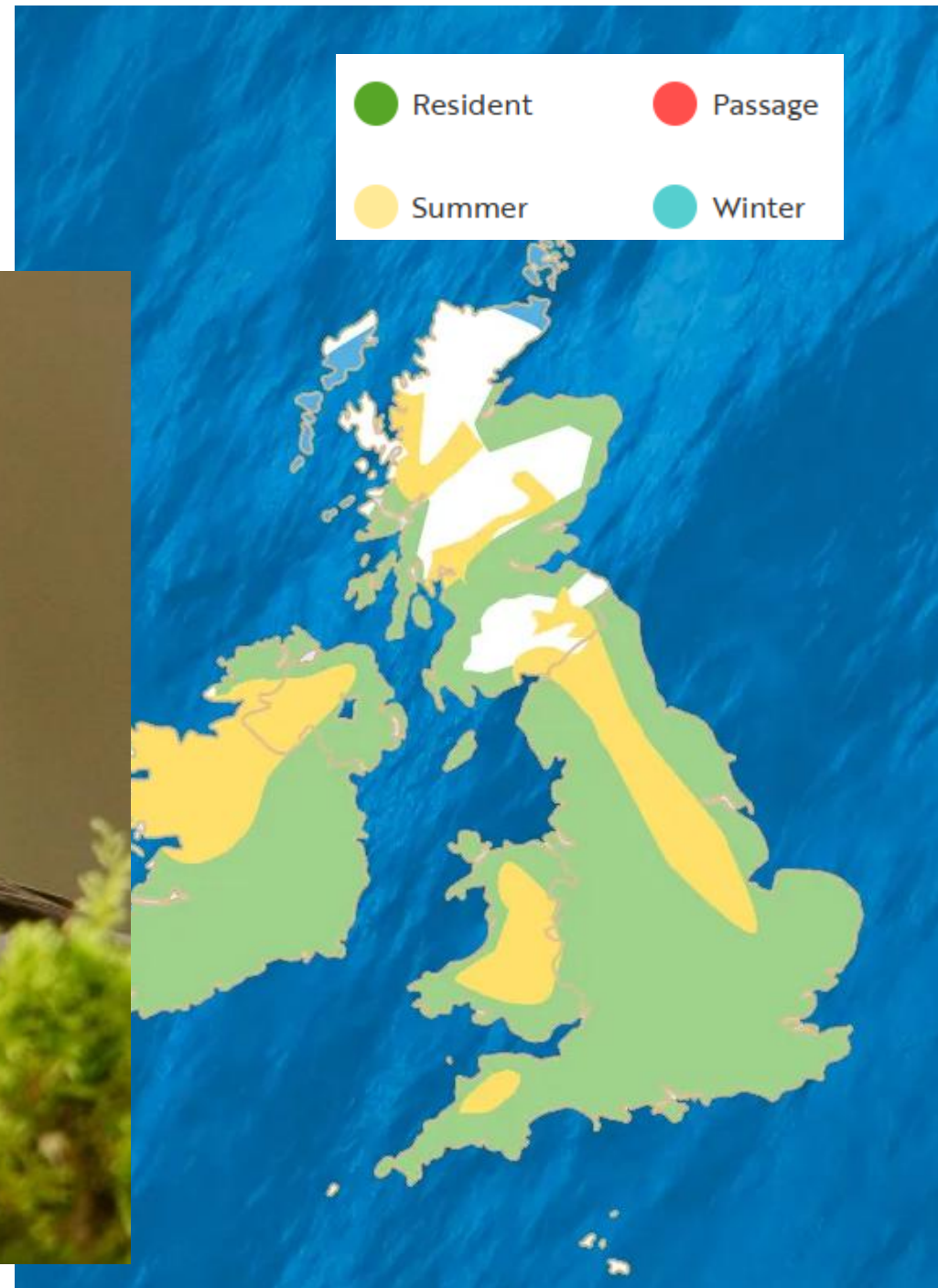
Greylag Goose

Mute Swan

Swallow

Swift

Blackcap



Chiffchaff



Nuthatch



Raven



Mammals in the Wildlife Garden 2025

Bank Vole

Brown Rat

Grey Squirrel

Hedgehog

Wood Mouse

Brown Rat



Grey Squirrel

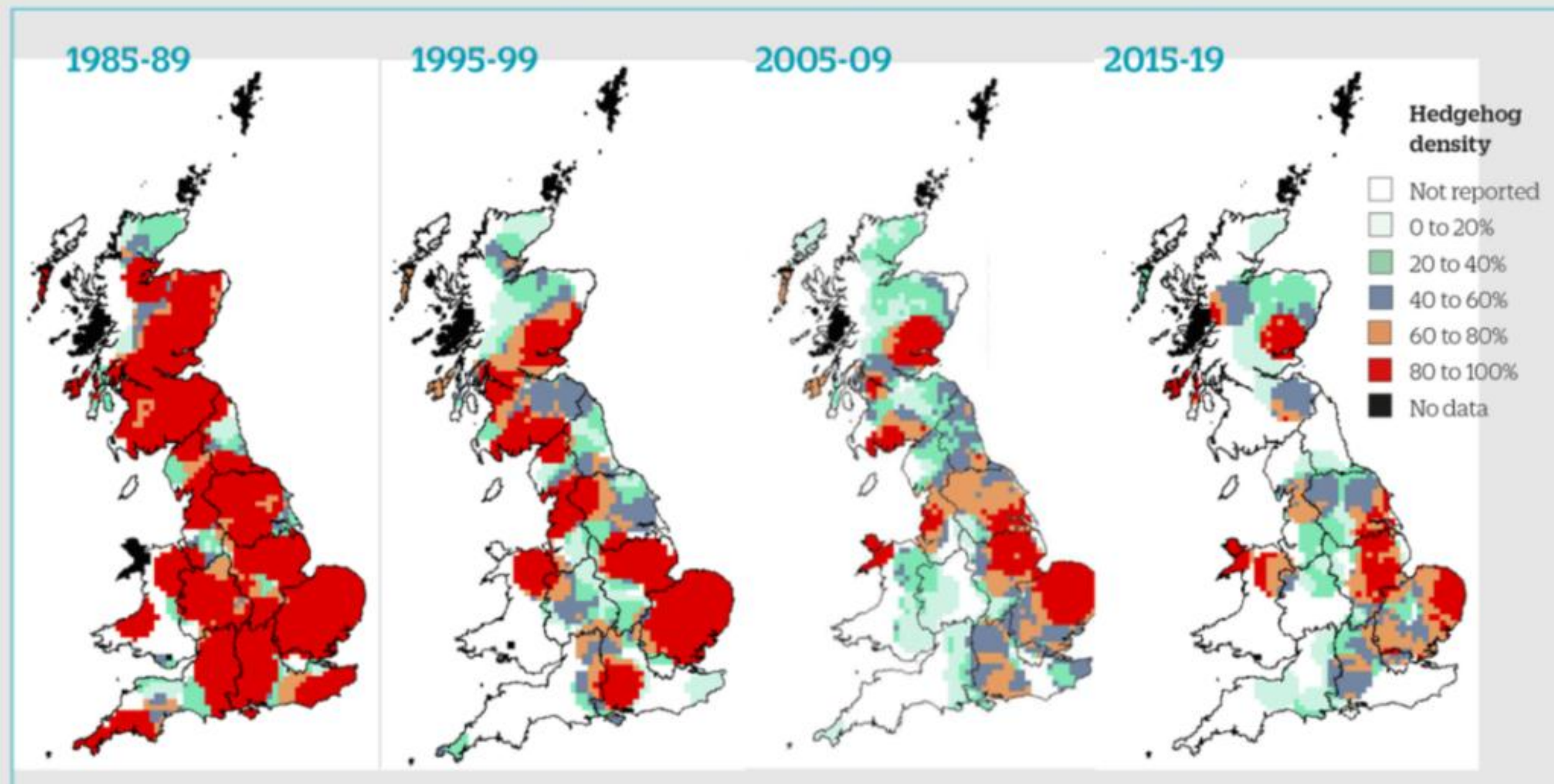


Grey Squirrel Damage to Trees



Hedgehog





[Decline in UK hedgehog population over 30 years » 21st Century Thame](#)

Bank Vole



Wood Mouse (field mouse, long-tailed field mouse, European wood mouse)



Wood Mouse

House Mouse

Bank Vole





Darley Park Wildlife Garden

Sources

Old photos of Derby from Derby Evening Telegraph

https://www.inderby.org.uk/files/9916/0630/3797/Tree_Trail_for_website.pdf

<https://butterfly-conservation.org/butterflies>

<https://www.bumblebeeconservation.org/learn-about-bumblebees/species-guide> (identification charts)

[Birds and wildlife \(RSPB\)](#)

closeup-shot-batman-hoverfly-standing-green-leaf-myathropa-florea_665346-22371.jpg (2000×1333) (batman hoverfly)

<https://i0.wp.com/www.myfsps.com/wp-content/uploads/2023/02/Ichneumon-Wasp-Life-Cycle-Four-Seasons-Pest-Solutions.jpg?fit=1500%2C977&ssl=1> (ichneumon wasp lifecycle)

[bank vole nest - Search Images](#)

[Grey Squirrel in drey,yawning. Mar '12. - photograph by Phil McLean](#)

Wood mouse (*Apodemus sylvaticus*) – British Mammals - Woodland Trust

[Decline in UK hedgehog population over 30 years » 21st Century Thame](#)